

Augusta

LIVABLE AREA 1900 SQ. FT.

2 BEDROOMS + DEN OR OPTIONAL 3RD BEDROOM

2 1/2 BATHS

GREAT ROOM

BREAKFAST NOOK

OPTIONAL 3RD BEDROOM



AUGUSTA CRAFTSMAN - A



AUGUSTA CRAFTSMAN - B



AUGUSTA CRAFTSMAN - C

Craftsman architectural exterior on all 4 sides



AUGUSTA PRAIRIE - D



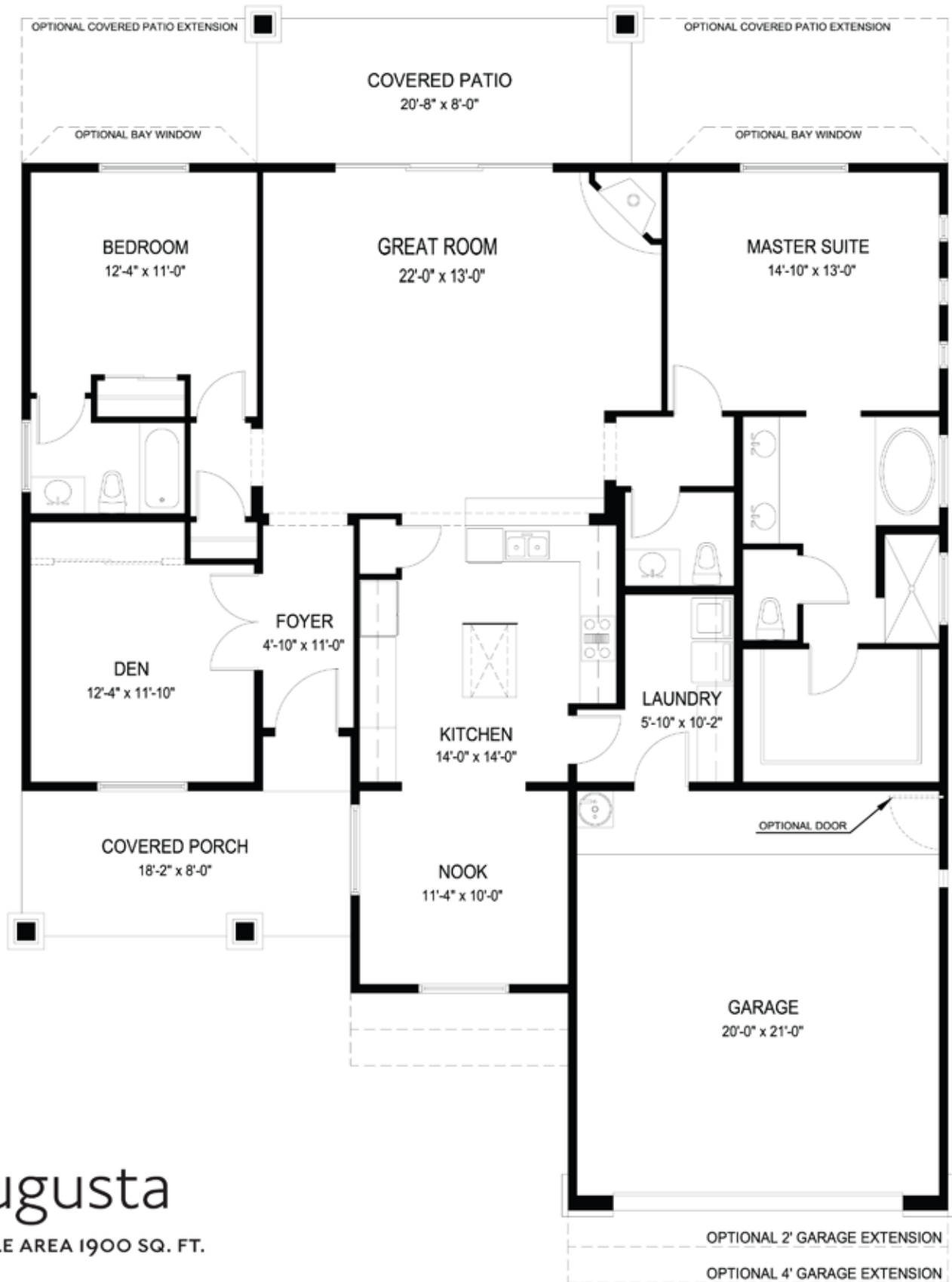
AUGUSTA PRAIRIE - E

928.445.4530 DornHomes.com MARKETED BY IMC & ASSOCIATES



In a continuing effort to improve our product, Dorn Homes reserves the right to make changes or modifications to floor plans, specifications, materials, features and colors without notice. Window styles, availability, sizes and locations as well as ceiling heights and vaults, and livable square footage will vary with choice of exterior elevations. All floor plan and lot square footages are approximate only. Total plan square footage calculations are from the outside of exterior walls and include interior partition walls. Optional features may be included at additional costs and are subject to construction cutoff dates. Lot premiums and HOA fees may apply. All maps, plans, landscaping, and elevation renderings are artists' conceptions. Prices are subject to change without notice. Consult sales associate for additional information. A public report is available at the State Real Estate Departments website. www.azre.gov ROC 204135. 03.23.11


dH dorn
HOMES
AT PRESCOTT LAKES



Augusta

LIVABLE AREA 1900 SQ. FT.

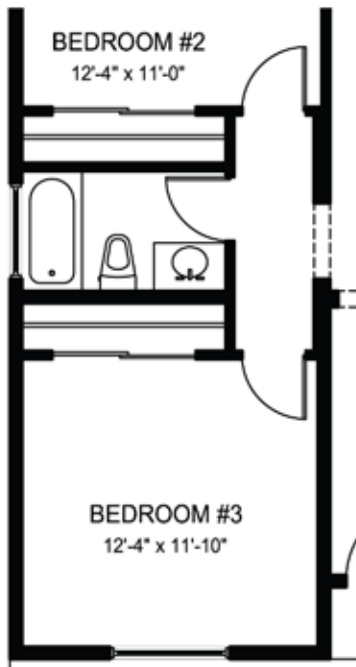
928.445.4530 DornHomes.com MARKETED BY IMC & ASSOCIATES

 In a continuing effort to improve our product, Dorn Homes reserves the right to make changes or modifications to floor plans, specifications, materials, features and colors without notice. Window styles, availability, sizes and locations as well as ceiling heights and vaults, and livable square footage will vary with choice of exterior elevations. All floor plan and lot square footages are approximate only. Total plan square footage calculations are from the outside of exterior walls and include interior partition walls. Optional features may be included at additional costs and are subject to construction cutoff dates. Lot premiums and HOA fees may apply. All maps, plans, landscaping, and elevation renderings are artists' conceptions. Prices are subject to change without notice. Consult sales associate for additional information. A public report is available at the State Real Estate Departments website. www.azre.gov ROC 204135. 03.23.11

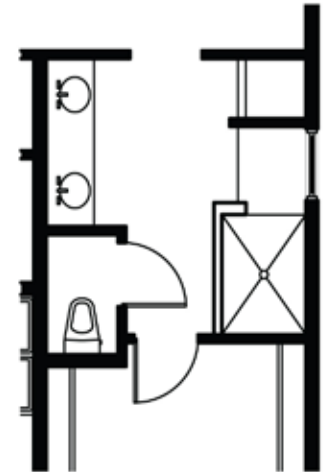
dH dorn
HOMES
AT PRESCOTT LAKES

Augusta

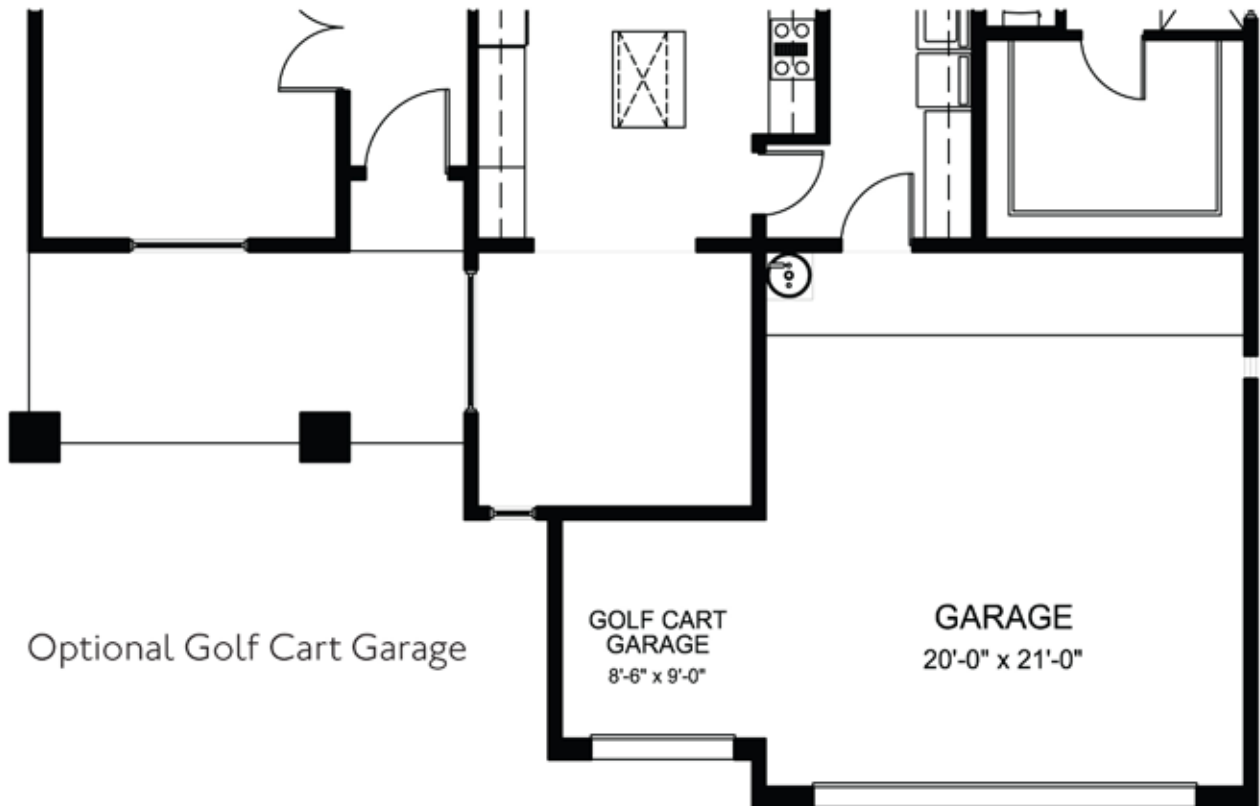
FLOORPLAN OPTIONS



Bedroom 3 and Optional Bath



Master Bath with Walk-in Shower



Optional Golf Cart Garage

GOLF CART GARAGE
8'-6" x 9'-0"

GARAGE
20'-0" x 21'-0"

928.445.4530 DornHomes.com MARKETED BY IMC & ASSOCIATES



In a continuing effort to improve our product, Dorn Homes reserves the right to make changes or modifications to floor plans, specifications, materials, features and colors without notice. Window styles, availability, sizes and locations as well as ceiling heights and vaults, and livable square footage will vary with choice of exterior elevations. All floor plan and lot square footages are approximate only. Total plan square footage calculations are from the outside of exterior walls and include interior partition walls. Optional features may be included at additional costs and are subject to construction cutoff dates. Lot premiums and HOA fees may apply. All maps, plans, landscaping, and elevation renderings are artists' conceptions. Prices are subject to change without notice. Consult sales associate for additional information. A public report is available at the State Real Estate Departments website. www.azre.gov ROC 204135. 03.23.11

dH dorn
HOMES
AT PRESCOTT LAKES