

# Sentinel Hill

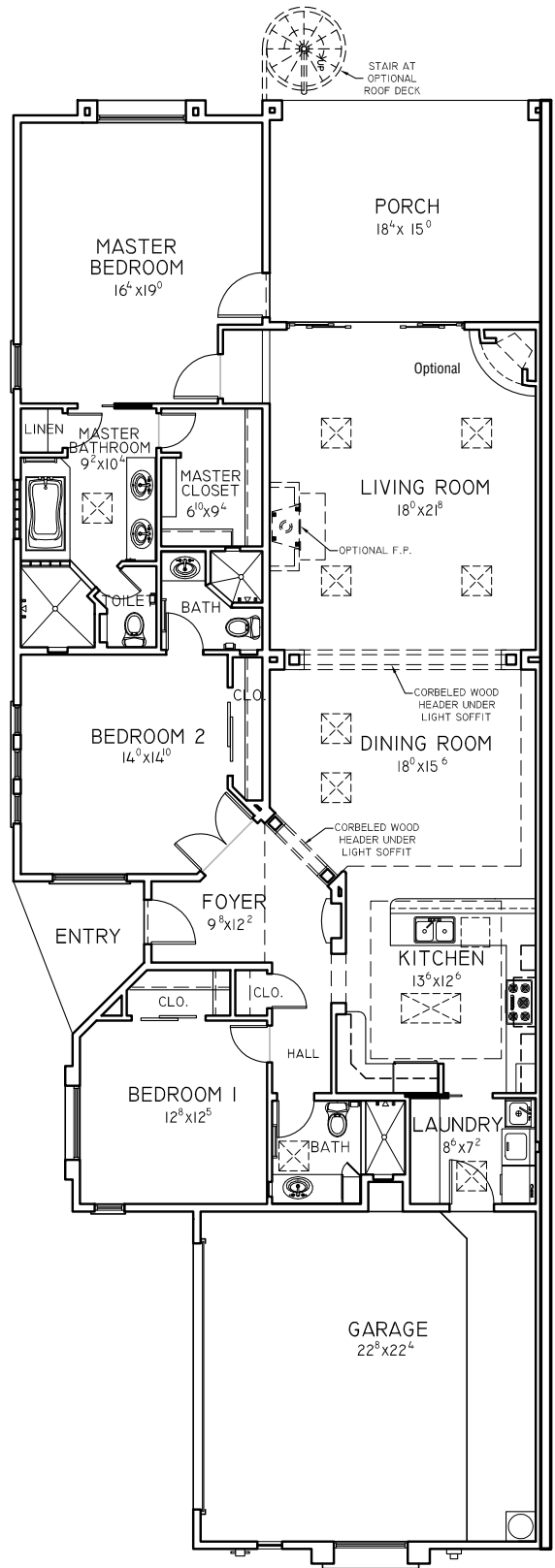
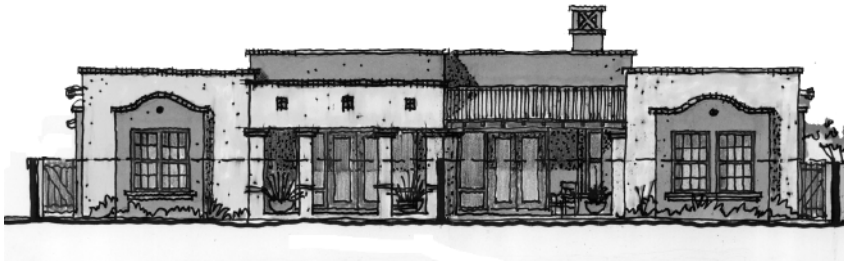
at Barrio de Tubac

## MARIN

Livable: 2,265 s.f

Measurements Are Approximate

- 3 Bedroom / 2 3/4 Bath
- Living Room
- Dining Room
- Covered Rear Porch



office: (520) 398-9670 • 1 (877) 398-2802 • [www.dornhomes.com](http://www.dornhomes.com)



2175 Embarcadero Way • Tubac, AZ 85646 • Marketed by Brasher Real Estate



by  
**DORN  
HOMES**

In a continuing effort to improve our product, Dorn Homes reserve the right to make changes or modifications to floor plans, specifications, materials, features and colors without notice. Window styles, availability, sizes and locations as well as ceiling heights and vaults and livable square footage will vary with choice of exterior elevations. All floor plan and lot square footages are approximate only. Total plan square footage calculations are from the outside of exterior walls and include interior partition walls. Optional features may be included at additional costs and are subject to construction cutoff dates. Lot premiums and HOA fees may apply. All maps, plans, landscaping and elevation renderings are artists' conceptions. Prices are subject to change without notice. Consult a Sales Associate for additional information. ROC 204135 9.28.10

Sentinel Hill at Barrio de Tubac